

Services

Technical expertise

- Depots and rail maintenance facilities
- Communication systems
- Signaling & train Control
- Power supply
- Electromechanical equipment
- Ticketing & passenger information systems
- Urban integration
- Intermodal stations
- Bridges & structures
- Tunneling
- Track
- Civil works
- RAMS & systems integration

Corporate

Key facts

- 400**
Near to million €
Turnover/ Year.
- Over 2,400**
professionals workforce
- Over 65**
years of experience
- +15,000^{KM}**
In railway projects
- +5,000^{KM}**
In high-speed rail
- +1,200^{KM}**
Metro & LRT
- +70**
Urban transport systems
- Over 35**
Depots and rail
maintenance facilities

Global footprint



Awards & recognitions

- 2017**
European Awards
Infrastructure & Transport
- 2020**
First place in the
Architecture, Construction &
Design Awards
- 2021**
Ranked 65th in the ENR Top
225 International Design
Firms List
- 2021**
Best Engineering
Corporate Governance
Europe Award
- 2021**
iMm 2021 award
Artificial Intelligence RESPIRA®
HVAC and energy saving project

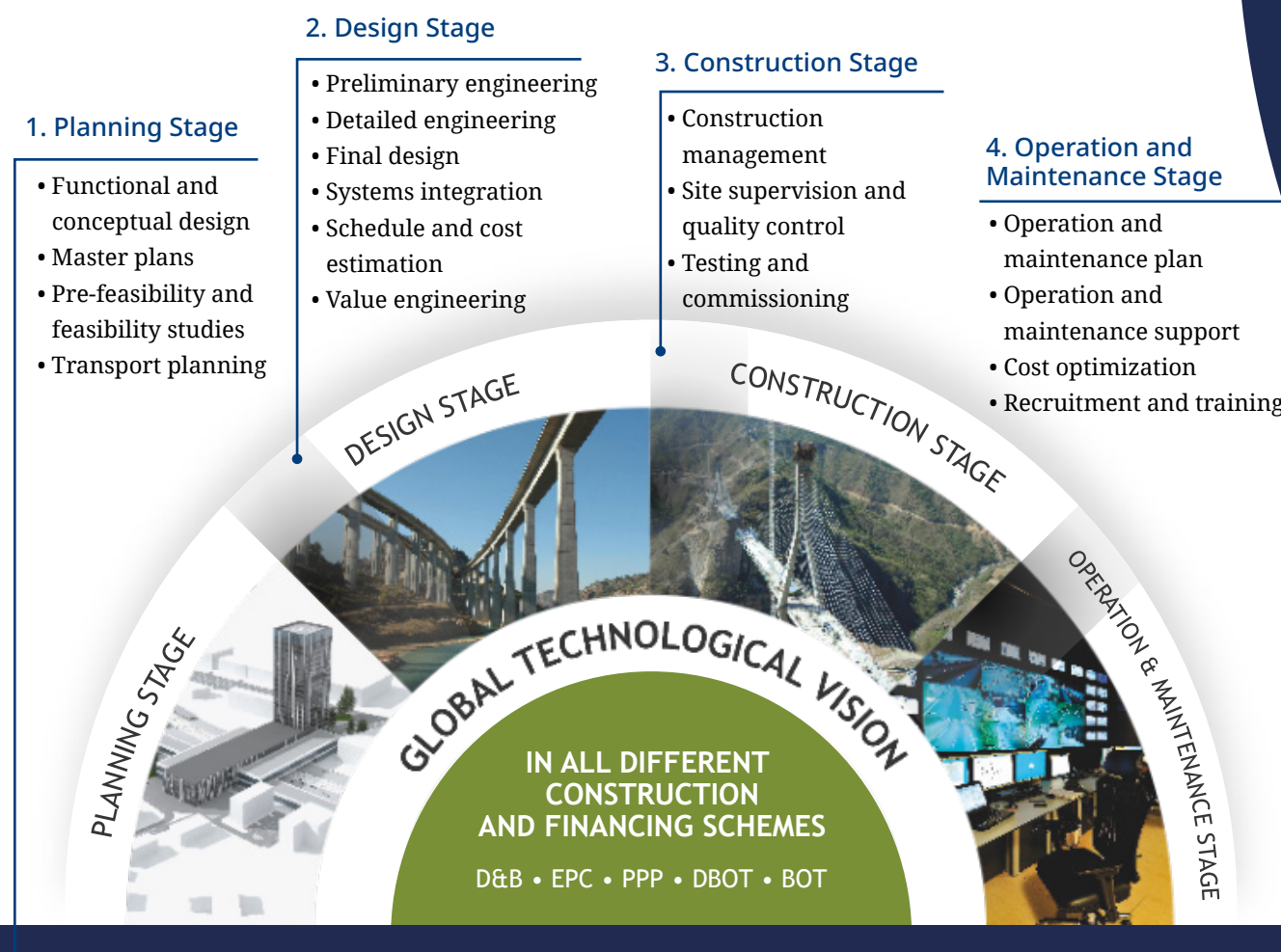
Rail and urban transit

About us

Sener provides sustainable and innovative solutions in infrastructure, transportation, and mobility, where we have the best teams to carry out comprehensive engineering projects. Our aim is to offer our clients the most advanced technological solutions and achieve international recognition based on our independence and commitment to innovation, sustainability, and quality.

We are a worldwide benchmark in urban transport systems, high-speed rail, highways, and roads. We have long since been a key player in the development of major projects in countries such as Brazil, Canada, Colombia, Chile, the United Arab Emirates, Spain, the United States, Mexico, and the United Kingdom.

Founded in 1956, we are a leading engineering and technology group with over 2,400 professionals across 20 countries and an operating revenue nearing 400 million euros.



All stages:

- Risk management
- Interface management
- RAMS - reliability, availability & maintainability
- Environmental and sustainability
- Quality assurance and quality control
- Independent checker engineering
- Project management consultancy services
- Documents and data management

Sectors



▲ Engineering & Environmental services for Palmade - Burkbanks section of California High Speed Line (USA)



▲ Railway link between Dar es Salaam and Morogoro (Tanzania)



▲ Doha Metro Depot (Qatar)



Rail

High Speed Rail

- HS2 phase one Engineering Delivery Partner. London - Birmingham section (UK)
- HSR Spanish Eastern Corridor (Spain)
- HSR Spain - France: Madrid - Zaragoza - Barcelona - French border (Spain - France)
- International High Speed Line Figueres - Perpignan (Spain - France)
- Engineering & Environmental services for Palmade - Burkbanks section of California High Speed Line (USA)
- California High Speed Line Construction Packages 2, 3 & 4 (USA)

Rail

- Toluca - Valle de Mexico Interurban Train (Mexico)
- Moroccan Railways Northern Lines (Morocco)
- Algerian 'Saida - Moulay Slissen' Railway Corridor (Algers)
- Railway link between Dar es Salaam and Morogoro (Tanzania)
- Morogoro-Makutupora Railway (Tanzania)
- Etihad Railway Packages 2B, 2D and 2F1 (UAE)
- North-South Rail Embankment Repair (KSA)
- Dammam-Riyadh Rail Siding Lines & Pt1 Signalling Design (KSA)

Depots

High Speed:

- HSR Egypt Main Depot and Control Center (Egypt)
- HS2 Washwood Heath Depot (UK)

Rail:

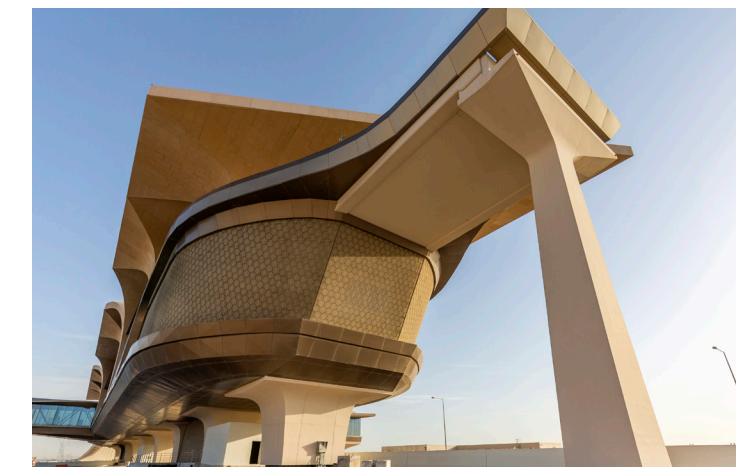
- Intercity Train Mexico-Toluca Depots (Mexico)
- Tren Maya (Mexico)

Metro :

- Doha Metro. Depot and Stabling Yard (Qatar)
- Guadalajara Metro Line 3 (Mexico)
- Depots and Workshop for Metro Lines 4, 5 and 6. Riyadh (KSA)



Urban Transit



▲ Doha Metro Elevated Stations Architectural Finishes (Qatar)



▲ Abu Dhabi LRT Study (UAE)

Metro

- Doha Metro Elevated Stations Architectural Finishes (Qatar)
- Doha Metro Depot and Stabling Yard (Qatar)
- Route 2020: Dubai Metro Red Line Extension (UAE)
- Riyadh Metro Network Package 3 - Lines 4, 5 and 6 (KSA)
- Algiers Metro Network (Algeria)
- West Cairo and East Cairo Monorail (Egypt)
- Panama Metro Line 3 - Monorail (Panama)

LRT

- Porto LRT Network (Portugal)
- Coruña LRT (Spain)
- Oran LRT (Algiers)
- Lusail LRT (Qatar)
- Abu Dhabi LRT Study (UAE)
- Kaohsiung LRT (Taiwan)
- LRT Kuala Lumpur (Malaysia)

Bridges & Viaducts

- Cairo Monorail (Egypt)
- "Contreras" arch viaduct over Contreras Reservoir (Spain)
- High Speed Line: Spanish Eastern Corridor, Section Valencia-Puzol, "Carraixet" viaduct (Spain)
- Toluca viaduct (Mexico)
- Minglanilla - Villargordo del Cabriel HSL Madrid - Valencia (Spain)
- HSR Orense - Santiago Arenteiro viaduct (Spain)
- Doha Metro Red Line Major Elevated Civil Works (Qatar)

▲ H.S.L. Madrid-Valencia (Spain)



Tunnels

- Engineering & Environmental services for Palmade - Burkbanks section of California High Speed Line (USA)
- Panama Metro Line (Panama)
- Barcelona Metro Line 9 (Spain)
- HSL Figueres - Perpignan Perthus Tunnel (Spain - France)
- Port Said Tunnels (Egypt)

▲ Port Said Tunnels (Egypt)

Stations & Architecture

- Los Angeles Union Station Master Plan (USA)
- Madrid Intermodal 'Sol' Station (Spain)
- Barcelona 'La Sagrera' Intermodal Station (Spain)
- Valencia Central Station (Spain)
- Doha Metro Elevated Stations Architectural Finishes (Qatar)

▲ HSR Rosa de Lima Station in Burgos (Spain)

Rail Systems

Systems Design

- Santiago de Chile Metro Line 1 (Chile)
- Toluca - Valle de Mexico Passenger Train (Mexico)
- California HSR verification and validation (USA)
- HS2 Engineering Delivery Partner (UK)
- Barcelona Metro Line 9 (Spain)

Systems Integration

- Panama Metro Line 3 - Monorail (Panama)
- California High Speed Rail (USA)
- Cairo Monorails (Egypt)
- Finch LRT Systems & Track (Canada)

Systems Assurance and RAMS

- Edinburgh Tram - York Place to Newhaven (UK)
- Interurban Railway Mexico DF - Toluca (Mexico)
- Etihad Rail Packages 2B and 2D (UAE)
- Green & Purple Line Project Tel Aviv LRT (Israel)
- Cairo Monorail (Egypt)

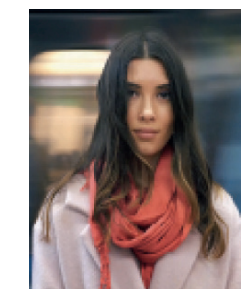
Independent Safety Evaluations

- AsBO for Adif High Speed Rail Projects (Spain)
- ISA Services for Ottawa LRTs (Canada)
- ISA for Lisbon Metro (Portugal)
- IV&V Edmonton Valley Line West LRT (Canada)

Innovation

From BIM (Building Information Modeling) to the Internet of Things (IoT), at Sener, we take things a step further: we design a wide range of advanced solutions whose common denominator is the ability to solve specific needs in very different fields. These solutions include both systems based on the collection, processing and analysis of data as well as inventions of devices and physical systems.

- RESPIRA®: an artificial intelligence system for the optimization of ventilation and HVAC management.
- ACROT: TBM Risk Control and Operation Assessment.
- BlockSAT: System for the signaling and management of railway traffic.
- 'Aerotraviesa': Aerodynamic sleeper for HSL to diminish flying ballast.
- Cross wind protection system for High Speed Railway Lines.
- UIC Handbooks for High Speed Lines.
- System for the synchomodal planning of maritime ports, railway and road operations.
- Depot 10.0: Depots for the future.
- Station 2040: Future stations.
- Intelligent projected signage solution for driving in foggy areas.
- Road and tunnel facility management system.



respira
by **sener**
Artificial Intelligence Ventilation.
Increase commuters comfort.



acrot
by **sener**
Advisory system for risk control in tunnels.
Increase projects safety

